




polydentia

swiss manufacture 

**DKS**

دنیای  
کالای  
سینا

نماینده انحصاری POLYDENTIA سوییس



SWISS  
MADE



#### Which myTines do I use?

**LOW** crown  
**HEIGHT** teeth



Use  
myTines  
Small



**NORMAL** crown  
**HEIGHT** teeth



Use  
myTines  
Medium



**WIDE CAVITY** preparations/**MISSING** cusp



Use  
myTines  
Large



### myClip 2.0

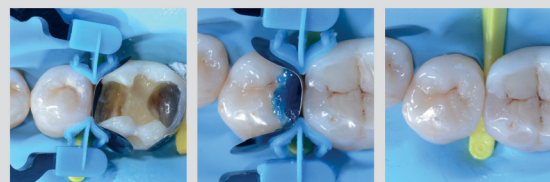
REF 6805

- All-in-one sectional matrix ring. No need for ring forceps
- Suitable for teeth of different crown heights and wide cavity preparations
- Optimal separation force
- Quick, easy, one-hand ring positioning
- Replaceable, interchangeable and autoclavable plastic extremities

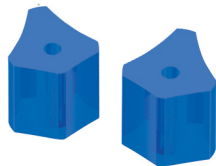
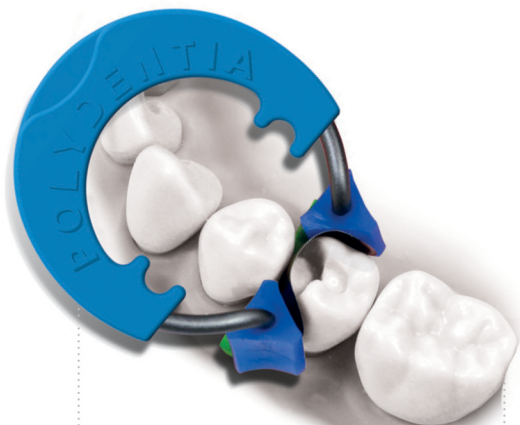
### myQuickmat Forte kit

REF 6806

- Strong separation force for tight contacts
- Suitable for teeth of different crown heights and wide cavity preparations
- Replaceable, interchangeable and autoclavable plastic extremities
- Exceptional matrix adaptation and retention
- Complete kit including myForceps







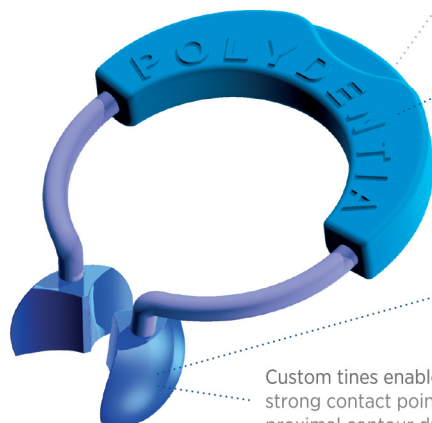
- Flexible to allow to carefully bend the matrix to shape without collapsing into the cavity
- Embrace the matrix: optimal contact points
- 24 combinations to enhance the adaptability to the clinical situation
- Autoclavable and replaceable
- Customizable: cut and shape according to necessity



myForceps



myCustom Resin

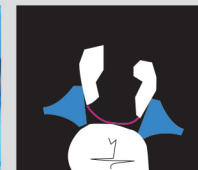


Nickel Titanium ring with reinforcement

Custom shaped tines made using light curable myCustom Resin



Custom tines enable to achieve strong contact points and precise proximal contour during restoration



## myQuickmat Classico kit

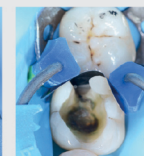
REF 6804

- Optimal, gentle separation force for tight contacts
- Ring and Delta Tubes entirely autoclavable
- Excellent matrix adaptation and retention
- Complete assortment of matrices and wedges

3 examples of the 24 possible combinations

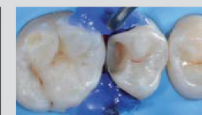


Scan this QR code and discover all the 24 combinations



## myCustom Rings kit

- Proven technique developed by Style Italiano
- Customizable extremities
- Complete range of sectional matrices included
- Clinical cases, support and updates are available at: [www.styleitaliano.org](http://www.styleitaliano.org)



anatomically contoured  
for better restorations  
and correct contact  
points

easy tightening  
by hand

ultra-thin  
(0.03mm) for  
tight contact  
points

## API (Autoclavable Placement Instrument for Quickmat All-round)

API is the Autoclavable Placement Instrument that makes Quickmat All-round stable and easy to place. Ergonomic and easy to use, API is the All-round Star!

## The Wedge

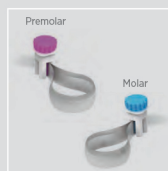
Interdental wedges that combine flexibility and rigidity for optimal matrix adaptation even in concave areas.



# new! myQuickmat All-round

developed with **STYLE ITALIANO™**

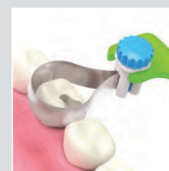
myQuickmat All-round is the circumferential matrix system designed to perform anatomical posterior restorations of teeth with missing structures. The easy-to-use Quickmat All-round matrices enable restorations with naturally contoured anatomies and tight contact surfaces. Thanks to API (Autoclavable Placement Instrument), positioning Quickmat All-round matrices is stable and straightforward. API provides support and prevents the tensioning spool from tilting during matrix tightening. With myQuickmat All-round circumferential matrix system, you can comfortably treat challenging cases in the posterior region, working on an obstacle-free, accessible operating field.



1. Select the appropriate matrix size according to the clinical situation



2. Place the spool on API (Autoclavable Placement Instrument for Quickmat All-round)



3. Position the spool over the tooth to be restored



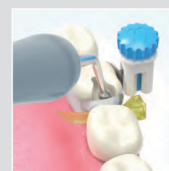
4. Gently push the matrix to insert it into proximal toward cervical



5. Turn the tensioning knob clockwise to tighten the matrix around the tooth to be restored. Then, gently remove API



6. Select the appropriate sized The Wedge to adjust the matrix cervically and insert it firmly



7. Burnish the matrix. For a better contact, burnish the band towards the adjacent tooth using an appropriate instrument. Proceed with the restoration



8. After the cavity is filled and light cured, turn the tensioning knob counterclockwise to loosen the matrix, then remove the matrix gently by pulling the spool upwards.



*"Modern conservative dentistry needs restorative solutions that simplify our procedures, making them more precise and efficient at the same time. myQuickmat All-round is a good example of this. It allows performing posterior restorations comfortably and straightforwardly, achieving anatomical results with natural contours and correct contact points."*

Dr Jordi Manauta,  
Italy



Images courtesy of Dr Jordi Manauta



# Rings, Extremities

## Sectional Matrix Rings



**REF 6805**  
myClip 2, 2.0 pcs.,  
myTines M, 2 pairs  
myTines S, 1 pair  
myTines L, 1 pair



**REF 6806**  
myRing Forte, 2 pcs.,  
myTines M, 2 pairs  
myTines S, 1 pair  
myTines L, 1 pair



**REF 6804**  
myRing Classico, 2 pcs.,  
Delta Tubes, 2 pairs



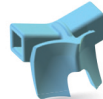
## Sectional Matrix Rings Extremities



**REF 6304**  
myTines Small  
for myClip 2.0  
& myRing Forte  
6 pairs



**REF 6303**  
myTines Medium  
for myClip 2.0  
& myRing Forte  
6 pairs



**REF 6306**  
myTines Large  
for myClip 2.0  
& myRing Forte  
6 pairs



**REF 6312**  
Diamond<sup>24</sup>  
15 pairs



**REF 5712**  
Delta Tubes  
15 pairs



## myQuickmat All-round Refill



**REF 6851**  
API, Autoclavable  
Placement  
Instrument for  
Quickmat All-round  
2 pcs



**REF 6855**  
Quickmat All-round  
circumferential posterior  
matrixes - premolar  
0.03mm/5.5mm  
35 pcs



**REF 6856**  
Quickmat All-round  
circumferential posterior  
matrixes - molar  
0.03mm/6.3mm  
35 pcs

## Symbols



Ultrasonic bath



Washer-disinfector for thermal disinfection


Sterilizable in a steam sterilizer (autoclave)  
at the temperature specified







# Contoured Tofflemire Matrices

(0.025mm / .04 - “001mm / .0016”)



- Easy to burnish, soft stainless steel









Content	Height	Thickness	REF
<b>Premolars</b>			
 30 pcs.	5.5 mm	0.025 mm	6109
 30 pcs.	5.5 mm	0.04 mm	6107
<b>Molars</b>			
 30 pcs.	6.3 mm	0.025 mm	6108
 30 pcs.	6.3 mm	0.04 mm	6106



# Contoured Anatomical Matrices (0.03mm / .0012”)









- Anatomically preformed and contoured
- Easy to burnish, soft stainless steel

Content	Height	Thickness	REF
<b>Premolars</b>			
 30 pcs.	4.5-5 mm	0.03 mm	6115
 30 pcs.	7.5-6.5 mm	0.03 mm	6114
 30 pcs.	7.5-4.5 mm	0.03 mm	6113
 30 pcs.	7.5-4.5 mm	0.03 mm	6116
<b>Molars</b>			
 30 pcs.	4.6-3-5 mm	0.03 mm	6117
 30 pcs.	9.0-7.0 mm	0.03 mm	6118
 30 pcs.	9.5-7.0 mm	0.03 mm	6119
 30 pcs.	9.5-7.0 mm	0.03 mm	6120



# Quickmat Sectional Matrices (0.025mm / 0.04 - “0.01mm / 0.16”)

- Easy to position rigid matrices
- Easy to burnish, soft stainless steel
- 2 thickness sizes
- Various matrix sizes


Content	Height	Thickness	REF
 100 pcs. Premolar	5 mm	0.025 mm	5735
 100 pcs. Molar	6.4 mm	0.025 mm	5736
 100 pcs. Premolar	5 mm	0.04 mm	5705
 100 pcs. Molar	6.4mm	0.04 mm	5706
 50 pcs. Extended	6.4mm+Ext.	0.025 mm	5756
 50 pcs. Extended	6.4mm+Ext.	0.04 mm	5746

<b>Junior Quickmat</b>			
 100 pcs.	3.75 mm	0.04 mm	5708



# Transparent Matrices (0.075mm / .0029”)

- For an optimized composite polymerization
- Contoured matrix
- Polyester matrix for posterior restorations

Content	Height	Thickness	REF
 100 pcs. Premolar	5 mm	0.075 mm	5765
 100 pcs. Molar	6.4 mm	0.075 mm	5766
 50 pcs. Extended	6.4mm+Ext.	0.075 mm	5776










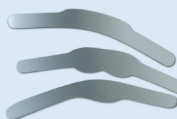
## Tofflemire Matrices

(0.025mm / .003" – "001mm / .0012" – 0.04mm / .0016")



- Easy to burnish, soft stainless steel

Content	Height	Thickness	REF
<b>Premolars</b>			
 50 pcs.	5.5 mm	0.025 mm	5921
 50 pcs.	5.5 mm	0.03 mm	6104
 50 pcs.	5.5 mm	0.04 mm	6103
<b>Molars</b>			
 50 pcs.	6.3 mm	0.025 mm	5920
 50 pcs.	6.3 mm	0.03 mm	6102
 50 pcs.	6.3 mm	0.04 mm	6101









## Anatomic Matrices

(0.03mm / .0012")



- Anatomically preformed

Content	Height	Thickness	REF
<b>Premolars</b>			
 50 pcs.	4.5-5 mm	0.03 mm	5715
 50 pcs.	7.5-6.5 mm	0.03 mm	5714
 50 pcs.	7.5-4.5 mm	0.03 mm	5713
<b>Molars</b>			
 50 pcs.	4.6-3-5 mm	0.03 mm	5717
 50 pcs.	9.0-7.0 mm	0.03 mm	5718
 50 pcs.	9.5-7.0 mm	0.03 mm	5719



## Softrix matrix strip

(0.025mm / .001")



- Burnishable soft steel matrix strip

Content	Height	Thickness	REF
 3 m	6 mm	0.025 mm	5906
 3 m	8 mm	0.025 mm	5908



## Tofflemire Transparent Matrices

(0.075mm / .0029")



- For an optimized composite polymerization
- Polyester matrix for posterior restorations

Content	Height	Thickness	REF
<b>Premolars</b>			
 50 pcs.	5.5 mm	0.075 mm	5936
<b>Molars</b>			
 50 pcs.	6.3 mm	0.075 mm	5916









## Clearmat Transparent Matrices

(0.075mm / .0029")



- For an optimized composite polymerization
- Anatomically preformed
- Polyester matrix for posterior restorations

Content	Height	Thickness	REF
<b>Premolars</b>			
 50 pcs.	4.5-5 mm	0.075 mm	5915
 50 pcs.	7.5-6.5 mm	0.075 mm	5914
 50 pcs.	7.5-4.5 mm	0.075 mm	5913
<b>Molars</b>			
 50 pcs.	4.6-3-5 mm	0.075 mm	5917
 50 pcs.	9.0-7.0 mm	0.075 mm	5918
 50 pcs.	9.5-7.0 mm	0.075 mm	5919



## Tofflemire Contoured Transparent Matrices

(0.075mm / .0029")



- For an optimized composite polymerization
- Contoured matrix
- Polyester matrix for posterior restorations

Content	Height	Thickness	REF
<b>Premolars</b>			
 50 pcs.	5.5 mm	0.075 mm	6140
<b>Molars</b>			
 50 pcs.	6.3 mm	0.075 mm	6141

*new!*

# QuickmatFLEX sectional matrices



## Excellent elastic memory and resilience

comparison between QuickmatFLEX sectional matrices and stainless steel sectional matrices



QuickmatFlex sectional matrices



Stainless steel sectional matrices



watch  
the  
video

ultra-thin titanium  
0,03mm

excellent resilience  
and elastic memory

optimised cervical  
extension for deep  
cavity restorations

3 matrix sizes:  
premolar, molar  
and molar deep

QuickmatFLEX are ultra-thin (0.03mm) titanium sectional matrices of excellent elastic memory. Easy to handle, they offer the right balance of flexibility and stiffness for optimised positioning and adaptation in tight interproximal spaces. Thanks to their reduced thickness and improved metal alloy, the matrices resist deformation as they feature spring back into the original shape. Class II treatments with QuickmatFLEX sectional matrices and our sectional matrix rings result in predictable restorations with anatomically correct anatomies, tight contact points and smooth composite surfaces that require minimal finishing steps.

 **QuickmatFLEX sectional matrices - REF 6785**  
Premolar 0.03mm/5mm, 100 pcs

 **QuickmatFLEX sectional matrices - REF 6786**  
Molar 0.03mm/6.4mm, 100 pcs

 **QuickmatFLEX sectional matrices - REF 6787**  
Molar Deep 0.03mm/6.4mm + Ext., 50 pcs



*"The unique properties of QuickmatFLEX sectional matrices are a real gamechanger for my daily restorations, not only in posteriors, but especially for anteriors. Their ultra-thin thickness and superior elastic memory make QuickmatFLEX a cost effective and timesaving solution that delivers predictable, anatomically correct results with tight contact points. It is the best matrix for any clinician."*

Dr. Jordi Manauta,  
Italy



Clinical image Dr. Giuseppe Chiodera



Clinical image by Dr. Antonino Nicolo'



**new!**

## Unica minideep anterior

even better adaptation on smaller anterior teeth



- Ultra-thin (0.03mm) stainless steel for tight contact surfaces
- Better cervical adaptation on mandibular incisors and laterals
- Placement wings for ease of positioning
- Malleable material for even greater adaptability
- Anatomically contoured for correct restoration with natural anatomies

Select *Unica minideep anterior* for:

- maxillary and mandibular laterals
- mandibular central incisors
- conoid teeth
- triangular teeth
- peg laterals
- teeth with narrow cervical diameter



## Unica anterior

a Polydentia classic for anterior restoration



- Ultra-thin (0.03mm) stainless steel for tight contact surfaces
- Placement wings for ease of positioning
- Contoured for anatomically correct restorations

Select *Unica anterior* for:

- maxillary central incisors
- maxillary lateral incisors
- canine teeth



Unica anterior matrix system allows for proximal and cervical margins to be restored at the same time.

**new!**

### UNICA MINIDEEP ANTERIOR

### CLINICAL CASE

#### diastema closure on central incisors and peg lateral incisors restoration

*The design of the new Unica minideep anterior makes this matrix suitable for many anterior tooth shapes as well as different clinical situations, such as small conical laterals, mandibular anteriors and distema closures.*

Dr. Osama Shaalan  
Palestine



for more information



### CLINICAL CASE

### UNICA ANTERIOR

#### upper central incisors Composite Veneers

*Unica anterior is the matrix to have when restoring upper central incisors. Its ingenious shape makes it the essential tool for optimising your anterior restoration protocols, allowing you to achieve predictable results and save chair time.*

Dr. Jordy Manauta  
Italy

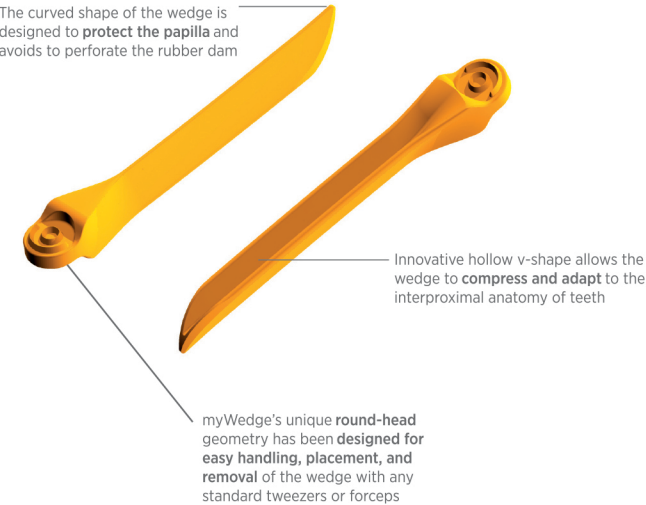


for more information







# myWedge

myWedge is an interproximal wedge made of hi-tech plastic material. Its innovative hollow v-shape allows it to compress and adapt to the interproximal anatomy of teeth. It prevents damage to the papilla while guiding and forming the matrix band to the anatomy of the cervical area of the tooth. myWedge's unique round-head geometry has been designed for easy handling, placement, and removal of the wedge with any standard tweezers or forceps.



- Innovative hollow v-shape
- Gripped head to prevent sliding
- Flashy colors for easy identification


Content	Size	REF
 100 pcs. myWedge	Extrasmall (XS)	7101
 100 pcs. myWedge	Small (S)	7102
 100 pcs. myWedge	Medium (M)	7103
 100 pcs. myWedge	Large (L)	7104
100 pcs. myWedge, assorted	(XS, S, M, L)	7100
400 pcs. myWedge, assorted	(XS, S, M, L)	7400



## Interdental Maple Wood Wedges

Made of maple wood from sustainably managed Swiss forests, these interdental wedges ensure an optimal matrix adaptation along the entire cervical margin.

- Anatomical shape
- Small size (XS) for pediatric dentistry
- Big size (XL) for periodontology

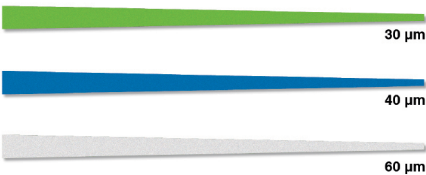
Content	Size	REF
 200 pcs. Pinky Wood Wedges	11 mm (XS)	5011
 1000 pcs. Pinky Wood Wedges	11 mm (XS)	+5011
 100 pcs. Wood Wedges	12 mm (S)	5012
 1000 pcs. Wood Wedges	12 mm (S)	+5012
 100 pcs. Wood Wedges	13 mm (M)	5013
 1000 pcs. Wood Wedges	13 mm (M)	+5013
 100 pcs. Wood Wedges	15 mm (L)	5015
 1000 pcs. Wood Wedges	15 mm (L)	+5015
100 pcs. Wood Wedges, assorted	(XS, S, M, L)	5001
400 pcs. Wood Wedges, assorted	(XS, S, M, L)	5040
600 pcs. Wood Wedges, assorted	(XS, S, M, L)	5060
1000 pcs. Wood Wedges, assorted	(XS, S, M, L)	+5001









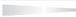
# Finishing & Polishing



## Tria-Shine

The triangular shape of these finishing and polishing strips with different width (from 1.5 to 5.5 mm) considerably facilitates its insertion into the interdental space, while protecting the contact point, and allows easy finishing at the optimum height. These strips are available in three color-coded grit sizes and are coated with aluminium oxide.

- Innovative triangular shape
- For protection of the contact point



Content	µm	REF
 Fine, 100 pcs.	30 µm	5504
 Medium, 100 pcs.	40 µm	5505
 Coarse, 100 pcs.	60 µm	5506
Combi-Pack, assorted, 100 pcs. each	30, 40, 60 µm	5507



## Abrasive Polishing Strip



This contouring and finishing roll strip for the approximal surfaces of composite restorations is made of flexible polyester and firmly coated with aluminium oxide particles. The strip is 4 mm wide and available in three different grit sizes.

- Strip length adaptable to treatment situation
- Practical box dispenser

Content	µm	REF
 Fine, 10 m	30 µm	5511
 Medium, 10 m	40 µm	5501
 Coarse, 10 m	60 µm	5502



دنیای  
کالای  
سینا

 dksinaco  dksina.co

تهران ، بلوار کشاورز ، کوچه ورنوس ، پلاک ۹ ، طبقه اول ، واحد ۱ ، کدپستی : ۱۴۱۵۹۵۳۱۳۱  
تلفن : ۵۰ - ۸۸ ۹۹ ۸۲ ۴۸ (۰۲۱) فاکس : ۵۱ - ۸۸ ۹۹ ۸۲ ۵۱ (۰۲۱)

Unit 1, No.9, Vernous St., Keshavarz Blvd., Tehran - Iran. Postal Code : 1415953131

Tel : (+9821) 88 99 82 48 - 50 Fax : (+9821) 88 99 82 51

Website : [www.dksina.ir](http://www.dksina.ir)